

# RENZ®

BINDING AND LAMINATING SYSTEMS

## RENZ Pouch-Laminating Systems

HT 330 L

HT 330 Dual

HT 330 P

Permanent protection makes your documents tear resistant, dust repellent, durable and tamper-proof with crisper colours for an attractive, professional look.



### FEATURES

- ⊕ Compact metal construction
- ⊕ Attractive, modern design
- ⊕ Silicone transport wheels make a carrier unnecessary
- ⊕ Simple, user-friendly controls
- ⊕ Three machines to cover every requirement!
- ⊕ High quality machine

OFFICE LINE

Designed by kpg buero vierzwoelf gmbh, Schwäbisch Gmünd, Telefon 07175 999120



### HT 330 L

**Economical**  
The ideal machine for creating laminated documents with a film thickness of up to 125 mic. Two heated rollers maximise lamination quality. Adjustable temperature for all film thicknesses, LEDs indicate warm-up phase and ready state. Return function.



### HT 330 Dual

**Versatile**  
The versatile machine for regular office and copyshop use. Two heated rollers and an additional plate heater provide perfect laminated results up to a film thickness of 250 mic. Adjustable temperature for all film thicknesses. LEDs indicate warm-up phase and ready state. Stand-by function. If the machine is not used for 30 minutes after warming up, the temperature is automatically reduced to 50/60°C. Press the on button to heat up the machine again to the most recent set temperature and the machine is once more ready for operation. Return function.



### HT 330 P

**Compact**  
The heavy-duty machine for professional applications. Four heated rollers ensure the best possible laminated results. Individual temperature and speed setting for all film thicknesses, LEDs indicate warm-up phase, rate of throughput and ready state. Stand-by function. If the machine is not used for 30 minutes after warming up, the temperature is automatically reduced to 50/60°C. Press the on button to heat up the machine again to the most recently set temperature and the machine is once more ready for operation. Adjustable lamination speed for all function settings and optical speed indicator. Return function.



**Strong, durable drive mechanism with metal gearwheels.**



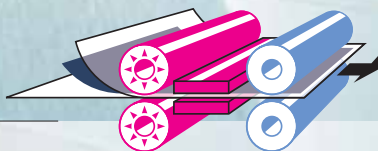
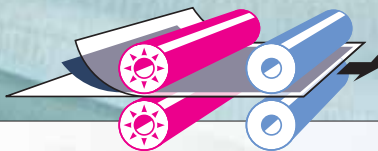
**Heated silicone rollers maximise lamination quality.**



**Robust drive unit.**

PLEASE OPEN HERE

#### OPERATING SEQUENCE OF LAMINATING AND FEED ROLLERS



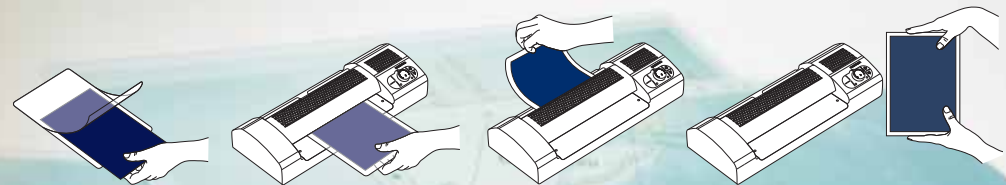
This new generation of pouch laminators is everything you would expect of Renz quality products. Sophisticated technology, modern, attractive design, sturdy metal construction, simple, user-friendly operation.

Frequently used documents are permanently protected after lamination and can be used for longer. A laminated document cannot be altered and is permanently bonded with its cover.



**Simple, user-friendly controls to set all lamination options. LEDs indicate warm-up phase and ready state (HT 330 P is shown here).**

#### OPERATING SEQUENCE

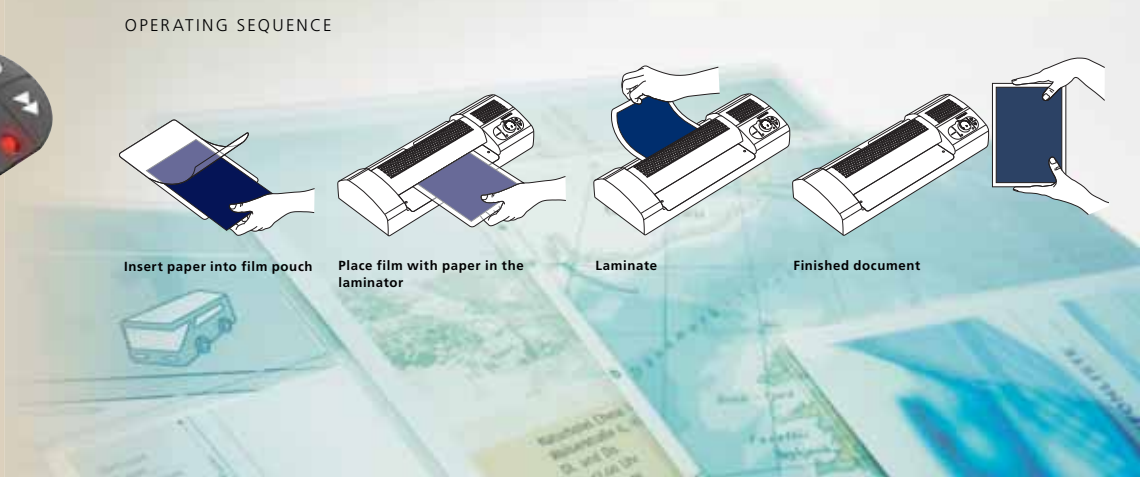


**Insert paper into film pouch**

**Place film with paper in the laminator**

**Laminating**

**Finished document**





All Renz laminating pouches are A grade, with only the best materials used in their manufacture. Available in thicknesses of 80-250 mic and in a range of sizes. All RENZ laminating pouches have rounded corners. Matt or glossy finishes available for A4 size.



Order number 494720960 (0109)



**Pre-perforated A4 laminating pouches for use in all standard ring binders. Laminating films with self-adhesive backs.**



**Clips and elongated hole punch for creating ID badge holders.**

#### DIMENSIONS AND DATA - AT A GLANCE

	HT 330 L	HT 330 Dual	HT 330 P
Working width	330 mm	330 mm	330 mm
Film thickness up to max.	125 mic.	250 mic.	250 mic.
Maximum laminated thickness	1 mm	1 mm	1 mm
Warm-up time	Approx. 3 minutes	Approx. 3 minutes	Approx. 4 minutes
Variable speed	No	No	Yes
Laminating speed	0,65 m/min.	0,65 m/min.	0,3-1,5 m/min.
Laminating temperature	Adjustable	Adjustable	Adjustable
Temperature control	Automatic	Automatic	Automatic
Cold lamination	Yes	Yes	Yes
Photo lamination	Yes	Yes	Yes
Stand-by function	No	Yes	Yes
Return function	Yes	Yes	Yes
Carrier	Not required	Not required	Not required
Number of rollers	4 rollers	4 rollers	6 rollers
Heating	2 rollers	2 rollers + 2 plates	4 rollers
Mains connection	230 V/50 Hz (650 W)	230 V/50 Hz (700 W)	230 V/50 Hz (1150 W)
Weight	8 kg	9 kg	17 kg
Dimensions (L/W/H)	51 x 20 x 11 cm	51 x 20 x 11 cm	55 x 30 x 14 cm

We reserve the right to make technical modifications